



1 Component, Cementitious, Shrinkage Compensated, Free Flow, Expansive, Crystalline, Structural Waterproof, Injection Grout for Sealing Cracks and Voids in Concrete or Soil for Improvement of Mechanical Properties

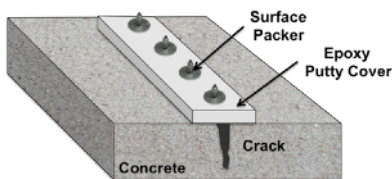
General

SS – WaterStop FC is a one component, cementitious, shrinkage compensated, free flow, structural, waterproof injection grout, which can be used for a variety of operations, where strong, reliable, impermeable fill material is required to treat voids & cracks in concrete, masonry or soil. **SS – WaterStop FC** ensures loads / forces are transferred across cracks and voids and that the element can be used to carry the intended loads in a short period of time. The material is free flowing and is fine enough to permeate small cracks and voids. The material is best suited to be used as a repair as well as waterproofing aid to seal cracks and voids reliably. The material is best suited to inject cracks 0.3 mm wide and above. This is used for proper filling of cracks and voids, leading to increase in strength / load bearing capacity of concrete.

SS – WaterStop FC is specially formulated to meet the requirements described above, owing to the selection of particularly suitable cements, special strength enhancing additives and selected polymer binders. The compound contains special Crystalline Additives that provide extra water resistance and help close micro-cracks for better performance. **SS - WaterStop FC** benefits the user by being easy to inject, provides rapid return to service, is non-corrosive, is suitable for both compressive & flexural loads,. Proper Injection ensures seamless load transmission to foundation the crack or void and ensures a precise, watertight, load bearing connection that most importantly does not shrink or crack.

Product Features

- High flow and stability, does not segregate
- Excellent early and final strengths
- Chloride free, fortified with crystalline additives
- Shrinkage compensated to ensure force fit and high load bearing capacity across cracks and voids
- High density, impermeability to water
- Excellent resistance to water, alkalis, oil and salts
- Easily adheres to steel and concrete
- Easily withstands loads after complete curing
- High Force fit into tiny cracks and voids
- Helps combat carbonation



Injection Methodology: Cementitious Grout



Waterproofing



Areas of Application

- Cracks and voids in concrete or soil
- Cracks and voids in masonry / brick structures
- Load bearing injection across cracks and voids in repair strategies
- Slightly damp areas
- Waterproofing injections
- Injection across cold joints and interfaces between horizontal and vertical interfaces in waterproofing
- Suitable for Building Structures, Infrastructure, Water Retaining Structures or Industrial Structures
- To strengthen weak concretes by filling of voids, to increase mechanical strengths.

Areas of Application

Specification Keywords	Shrinkage Compensated, Non-Shrink, Free Flow, Expansive, Crystalline, Structural, Waterproof, Injection Grout, Sealing Cracks / Voids in Concrete, Soil, strengthening of concrete
Delivered As	Grey Powder
Storage Instructions	Store in a cool, dry area away from sunlight in original packaging
Shelf Life	12 months
Post Use	Empty packaging completely. Dispose as per local regulations. Refer MSDS for suggestions.
Packing Size	30 kg

Assess Build Chem Private Limited



Hazards and Safety



Technical Data

Sp. Gravity	1.70 ± 0.05 (After Mixing)
Min. Use Temperature	20°C
Pot Life	25 to 30 Minutes
Setting Time	4 to 8 hours depending on ambient temperatures
Compressive Strength	> 40 N/mm ² in 28 Days
Flexural Strength	> 3 N/mm ² in 28 Days
Mixing Ratio	45 to 50% Water by weight of Powder depending on consistency requirements.
Consumption	2.0 kg Powder / liter Volume.

Instructions for Use

Prior to use, adequate surface preparation is needed. The substrate should be structurally sound, free from oils, grease, dust or curing compounds, etc. The cracked surfaces should be free from paints and laitance. The substrate should be damp, not saturated prior to injection of **SS – WaterStop FC**. If the voids to be filled are dry and absorbent, flush the voids with water prior to application of **SS - WaterStop FC** to remove dust and wet the substrate. Ensure that the substrate is moist but there should be no standing water present.

Weigh out the water and **SS – WaterStop FC**. Add the powder to the measured water and not vice-versa as it helps in dispersion of the polymers. Mix Mechanically for 2 to 3 minutes to get a flowable mix. Water if needed can be added to get the correct consistency.

Inject the grout using standard cement grouting pumps / membrane pumps. The use of gravity / pressure injection method depends on the crack width, crack depth, porosity and saturation of the substrate. Ensure the injection is continued till rejection. Grout the point within 30 minutes of mixing. Refer to the schematic on page 1. Cut and seal the packer post grouting.

Safety and Precautions

- Mix only small quantities that can be used within 30 minutes.
- Water should not be added to hardened grout.
- Higher temperatures accelerate the hardening and lower temperature delays it.
- Take suitable safety precautions at all times. Always wear protective goggles, safety shoes, masks and gloves.
- If inhaled, move immediately to fresh air. In case of skin or eye contact, flush immediately with water for 15 minutes.
- Remove contaminated clothing and shoes and call a physician.
- Clean up promptly after job is complete. Clean equipment with water and allow to dry in a well-ventilated area. Allow rags etc. to dry in a well-ventilated area out of the reach of children and pets.
- Local, state and federal regulations should be consulted for proper disposal procedures.